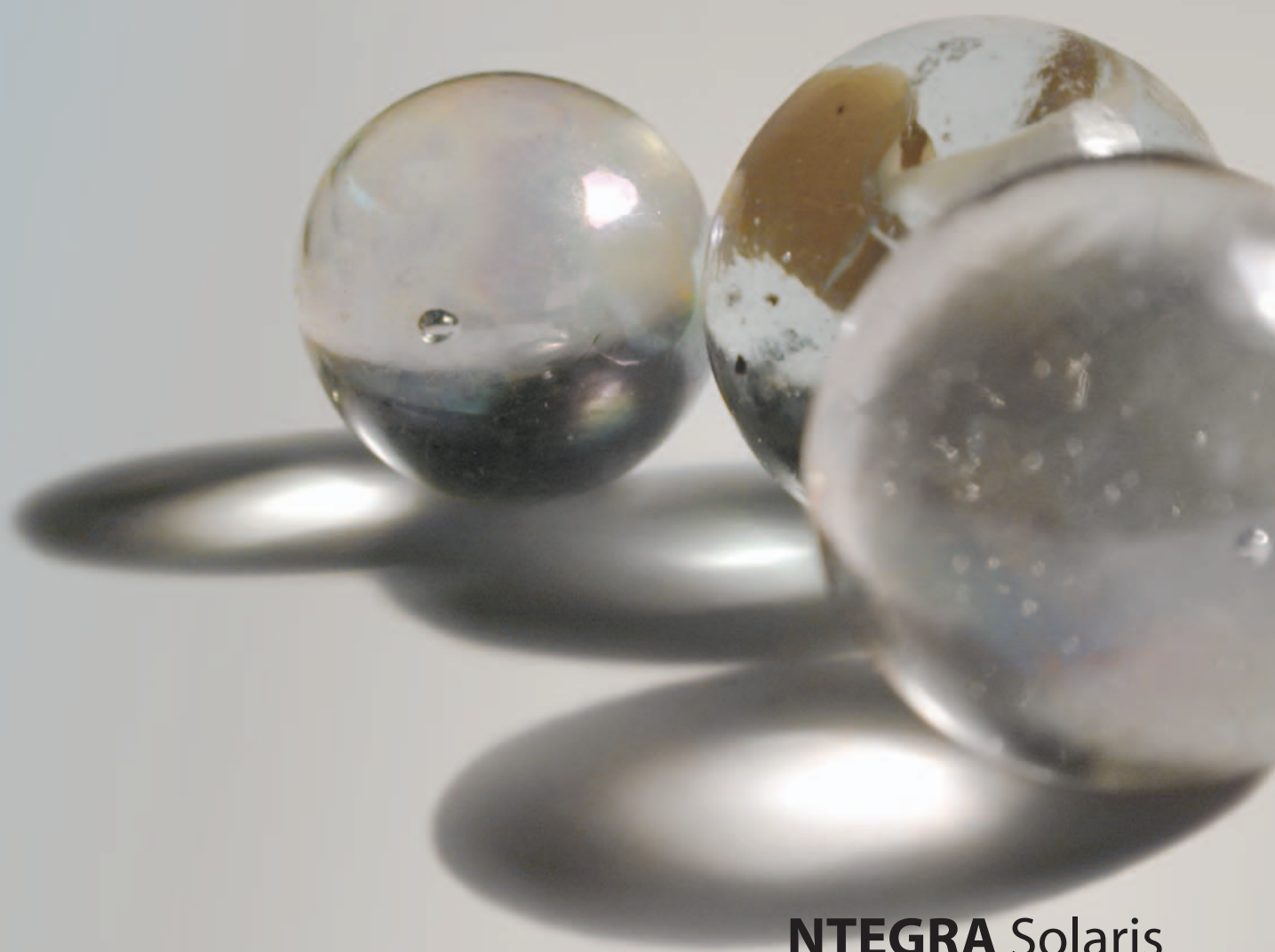


Collect the light



NTEGRA Solaris



NTEGRA Solaris

Rayleigh said the diffraction limit for light was $\lambda/2$.

Expect more!

In a nanoscale world, the optical diffraction limit of $\lambda/2$ presents a serious barrier to scientific progress. Now, ride the evanescent wave over that barrier with NTEGRA Solaris. Even more exciting: control the powerful system that observes a nanoworld which, until very recently, was invisible. Using the near-field effect, this scanning near-field optical microscope (SNOM) opens new investigations of optical properties far beyond the diffraction limit.

Once you begin to feel the rhythm of subwave breakthroughs, you will certainly agree:
NTEGRA Solaris is not only a good instrument, it is the new wave of scientific progress!

Three microscopes in one!

NTEGRA Solaris combines three different microscopy techniques: light, scanning nearfield optical microscopy (SNOM), and atomic force microscopy (AFM). Integration at this advanced level creates enormous design challenges because the conventional light microscope which uses standard optics and mechanics cannot provide the accuracy, precision of movement, and stability required for scanning probe microscopy or the efficiency necessary to collect the weak SNOM signal. When they invented NTEGRA Solaris, NT-MDT engineers took a unique approach. They built a stable, rigid light microscope objective right into the base of the SPM. The result: high resolution imaging with none of the optical microscope instability. Coupling this exceptional stability with a delicately sensitive detection makes NTEGRA Solaris perfect for advanced measurements, even at molecular scale.

Sensitive detectors + stray light elimination yield "pure" signal

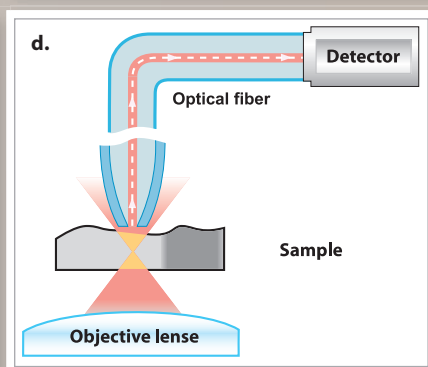
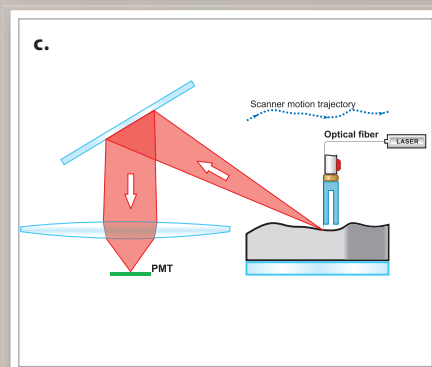
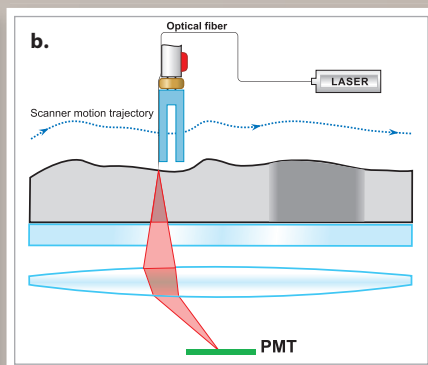
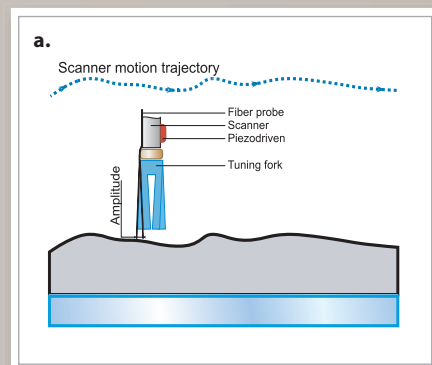
SNOM signals are much weaker than ambient light, demanding precise stray light control. Proprietary NT-MDT engineering and robust but elegant construction combine to guarantee that NTEGRA Solaris will provide you with superior protection from parasitic illumination. For the ultimate in sensitivity, Solaris incorporates the latest in PMT detectors. The proof is in the performance and validation tests confirm it: NTEGRA Solaris offers excellent high signal/noise ratio.

Reflected light + Transmitted light = Maximum characterization

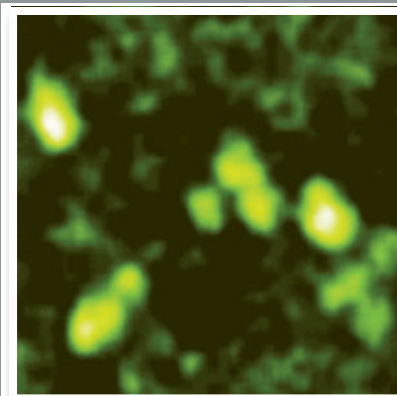
Every nearfield quantum carries critical information and, with weak SNOM signals, every quantum is precious. It is also well known that the transmitted and reflected light present different views of the sample. NTEGRA Solaris delicately detects the light from both channels simultaneously, instantly providing correlative images and measurements.

New engineering meets traditional quality

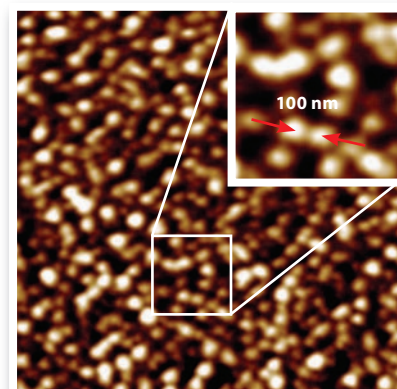
Successful nearfield microscopy rests on solving two problems: spatial resolution and detection efficiency. As a company, NT-MDT has grown from strong roots in physics and, as a result, our engineers and designers understand both these parameters and many others critical to SNOM. By consolidating all the traditional advantages of scanning probe microscopy with new directions in SNOM performance, they've built NTEGRA Solaris to take optical imaging and measurements on a whole new level.



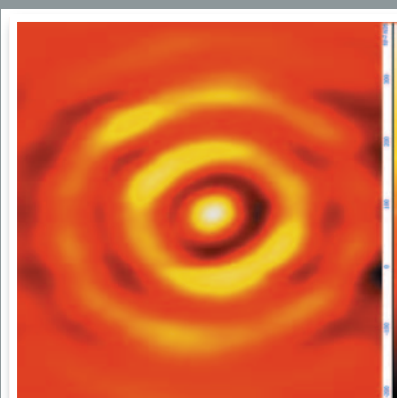
a) Shear force microscopy principle, b) SNOM Transmission mode principle, c) SNOM Reflection mode principle, and d) SNOM Collection mode principle



SNOM image of mitochondria dyed with FITC-labeled antibodies.
Scan size 1.7x1.7 μm



SNOM image of polymer with globular structure.
The enlarged scan area shows spatial resolution.
Scan size 3.5x3.5 μm



Diffraction of light passing through an objective of standard optical microscope. Laser intensity corresponds to the color brightness.
Scan size 4x4 μm



Scanning Near-Field Microscopy

Shear Force Microscopy / SNOM reflection, transmission, luminescence (optional)/ any AFM modes are available optionally

Specification

Laser module	Wavelength*	441, 488, 514, 532, 633 nm	
	Coupling unit	X-Y-Z positioner, positioning accuracy 1 μm	
		V-groove fiber holder	
		Coupling 40X objective	
Shear Force Imaging	Sample size	Up to $\varnothing 100$ mm, up to 15 mm in height	
	XY sample positioning range	5x5 mm	
	Readable resolution	5 μm	
	Positioning sensitivity	2 μm	
	Closed-loop operation	Capacitive sensors for 3 axes	
		Scanning by sample	Scanning by probe
	Scan range	100x100x10 μm	100x100x10 μm
	Non-linearity, XY	0.03 % (typically)	<0.15 %
	Noise level, Z	<0.2 nm (typically)	0.04 nm (typically), ≤ 0.06 nm
	Noise level, XY	<0.5 nm (typically)	0.2 nm (typically), ≤ 0.3 nm
	Quartz tuning fork base frequency	190 kHz	
	Optical fiber diameter	90 μm (for 480–550 nm), 125 μm (for 600–680 nm)	
	Aperture diameter	<100 nm	
Channels for simultaneous registration		Reflection	
		Transmission/Fluorescence	
PMT detectors (for each channel)	Spectral response	185–850 nm	
	Sensitivity at 420 nm	3×10^{10} V/W	
	Current-voltage conversion amplifier (built-in)	1×10^6 V/A	
	Frequency band width	20 kHz	
	High voltage power supply	built-in	
Vibration isolation	Dynamic	0.7–1000 Hz	
	Passive	above 1 kHz	

* 488 nm laser is included as a default; other lasers can be supplied optionally.

Papers:

- Fischer H., Nesci A., Leveque G., Martin O. J.F. Characterization of the polarization sensitivity anisotropy of a near-field probe using phase measurements // *Journal of Microscopy*. 2008.Vol. 230.
- Wang Q. Wang J. Zhang S. A nano-confined source based on surface plasmon Bragg reflectors and nanocavity // *Optics Express*. 2008.Vol. 16. N 24.